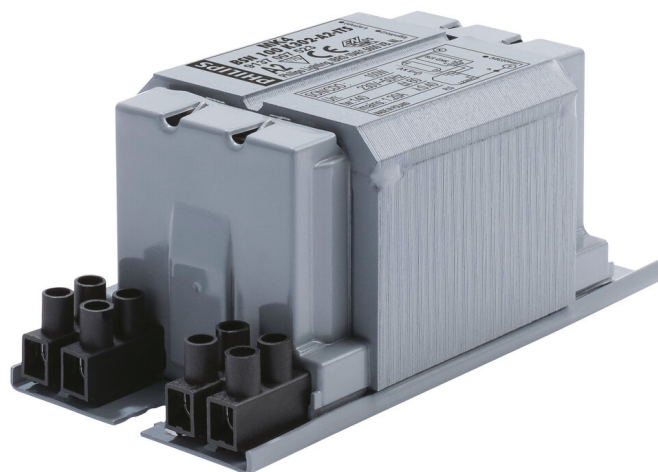


Philips BSN 100 K302-A2-ITS 230V 50Hz



Philips BSN 100 K302-A2-ITS 230V 50Hz

Article code: PH 740866

Last changed: 10-04-2026 10:14:19

Brand: PHILIPS

ETIM group: EG000030 - Accessories for lighting

ETIM class: EC001497 - Ballast (electrical)

Synonyms: Ballast, Conventional ballast, Conversion kit, Low-loss ballast, Ballast (electrical), Choke ballast



Specifications

Protection class according to IEC 61140:	None	Suitable for lamp power (1 lamp):	100.000 W
Width:	61 mm	Suitable for lamp power (2 lamps):	NA W
Model:	Conventional	Suitable for lamp power (3 lamps):	NA W
Height:	52 mm	Suitable for lamp power (4 lamps):	NA W
Dimmable:	No	Multiwatt model:	No
Housing:	Impregnated	Suitable for number of lamps:	1.000
Suitable for lamp power:	100.000 W	IFTTT support available:	No
With strain relief:	No	Dimming 0-10 V:	No
Length:	123 mm	Dimming 1-10 V:	No
For lamp type TC-D:	No	Dimming DALI:	No
For lamp type TC-DD:	No	Dimming DMX:	No
For lamp type TC-L:	No	Dimming potentiometer (integrated):	No
For lamp type TC-DEL:	No	Dimming LineSwitch:	No
For lamp type TC-TEL:	No	Dimming manufacturer's proprietary system:	No
For lamp type T7:	No	Dimming mains voltage modulation:	No
For lamp type T16:	No	Dimming phase cut-off (trailing edge):	No
For lamp type T26:	No	Dimming phase cut-on (leading edge):	No
For lamp type T-R:	No	Dimming programmable:	No
For lamp type TC-T:	No	Dimming RF:	No
For lamp type TC-S:	No	Dimming Sine Wave Reduction:	No
For lamp type HI:	No	Dimming Touch and Dim:	No
Nominal voltage:	230.000 V	Dimming Zigbee:	No
Degree of protection (IP):	Other	Dimming with push-button:	No
For lamp type HM:	No	No dim function:	Yes
For lamp type HS:	Yes	Dimming DSI:	No
For lamp type LS:	No	Operation by Bluetooth:	No
For lamp type T16-R:	No	Compatible with Apple HomeKit:	No
For lamp type T38:	No	Compatible with Google Assistant:	No
For lamp type TC-F:	No	Compatible with Amazon Alexa:	No
For lamp type TC-QEL:	No	Dimming DALI-2:	No
For lamp type TC-SEL:	No	Compatible with Casambi:	No

Packaging information

Weight	1.42 kg
Width	0.14 m
Height	0.11 m
Length	0.2 m
Packaging code <small>(according to EANCOM code list 7065)</small>	CT
Packaging form	Cardboard <p>->A cardboard box or container</p>
CBS-code	85041080

